

CRAZY CROW
Trading Post

Sale
22-4R



CROW CALLS



Sale Prices Good from July 1 through August 31, 2022
1.800.786.6210 - www.crazycrow.com



3-Band Broadcloth 80% Wool **Save on Overstock Colors!**

First seen among the Osage in the late 1800s, Crazy Crow reintroduced this style broadcloth in the 1980s, and it is now extremely popular throughout Indian Country. In 8 beautiful, bright colors with 3 wide, color-coordinated stripes along the selvedge edges. Great for blankets, skirts, leggings, aprons, trailers, vests and other dance regalia. Popularly priced and 60" wide. **To complete the catalog number, replace *** with the color number desired.**

3600-085-*** Reg \$26.00 **\$22.10** 1/2 Yard **\$41.65** Yd **\$37.40** Yd(5+)

Osage Delegation Cloth 100% Wool

Named for the Osage Delegation to Washington, D.C. in the late 1800s, this fine quality black broadcloth is tightly woven in 100% wool, featuring a 1-5/8" wide, yellow selvedge edging with a narrow black outer stripe. An exact reproduction of the popular, early cloth, it is finely finished and is soft to the touch, with a nice nap, and will woven like the early cloth. The perfect weight, tight weave and beautiful finish makes it just right for beadwork and ribbonwork on leggings, clouts, trailers, vests, skirts, blankets, etc. Made in the USA, this is the best there is! 59/60" wide.

3600-101-001 Reg \$28.75 **\$24.44** Ft. **\$34.21** 1/2 Yd. **\$63.75** Yd. **\$59.50** Yd.(3+)

4-Band Broadcloth 100% Wool

Our 4-Band Broadcloth has 4 wide selvedge bands of bright Yellow, Red, Blue & Yellow. Done in the same, tight twill weave as our other broadcloth, it is rich and velvety to the touch, carries beadwork & ribbonwork well, and is just right for blankets, skirts and other fine regalia. Width is 59/60". **MADE IN USA**

3600-103-265 Navy Cloth

Reg \$28.75 **\$24.44** Ft. **\$34.21** 1/2 Yd. **\$63.75** Yd. **\$59.50** Yd.(3+)

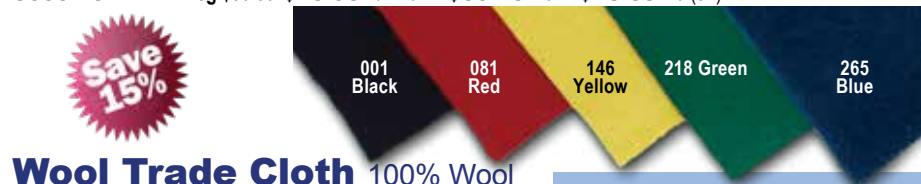


8-Band Broadcloth 100% Wool

Introduced as an alternative to our top grade Rainbow Selvedge 100% wool Broadcloth, this is very nice quality cloth and closely rivals the best on the market. It features the same 8 bands of brightly colored stripes in red, yellow, cream & navy blue, and the nice, soft finish is comfortable to wear. Tightly woven, it will support beadwork and ribbonwork while keeping its shape. Popularly priced and nice quality, it is an excellent choice for aprons, breechclouts, leggings, skirts & blankets, as well as other projects. Approximately 60" wide.

To complete the catalog number, replace *** with the desired color number.

3600-104-*** Reg \$30.50 **\$25.93** 1/2 Yd. **\$50.15** Yd. **\$43.35** Yd.(5+)



Wool Trade Cloth 100% Wool

We have improved the quality of our wool tradecloth and now make it in 100% wool! It is tightly woven with a soft, velvety finish, making it great for aprons, breechclouts, vests, leggings, skirts, coats and military uniforms. Ideal for beadwork and ribbonwork, it is usually bound with ribbon, Fox Braid, or a felt binding which was often cut in a sawtooth edge to simulate Stroud Cloth. Available in 5 beautiful, bright colors in 60" width. **Replace *** in item number with the color number desired.**

3601-085-*** Reg \$26.00 **\$22.10** 1/2 Yard **\$41.65** Yd. **\$37.40** Yd(5+)



**CLOSEOUT!
GET ONE
BEFORE
THEY ARE
GONE!**

Southwest Style Dopp Purses

Intricately woven in classic serape designs, the ultra soft acrylic yarn allows for show-stopping colors. These purses are sure to make a statement! Lined with an inside pocket and zipper closure. Imported. Appx. size: 14" H x 17" L x 3" D; Strap Drop: 12". **Assorted colors.**

4524-520-900

\$45.00 Ea \$40.50 Ea(3+)

Missouri River Handbags

We are so excited to introduce our very own line of handbags. These Missouri River brand bags borrow elements from historic Western or Native examples but update them into something brand new. Made from top quality cowhide, each bag is eye-catching whether your attending a powwow or spending a night out on the town. Two of our styles have hair-on cowhide flaps that are reminiscent of early buck flap hunting bags. Our tapestry bag is made of heavy upholstery fabric to give a stylish version of the mid-19th century carpet bags. Finally, our shopper bag has an embroidery pattern to pay homage to the great quillwork bags of the early 20th century. All bags are badged with a full leather Missouri River brand. We hope that this is just the start of a continuing line of quality products featured under the Missouri River name.



A 4524-250-001

Cross-body Bag w/ hair on flap

Dim. 8"X9"X3"

Reg. \$69.00 Ea

\$58.65 Ea

B 4524-250-002

Woman's Gusset Shoulder Bag

Dim. 12"X10"X3"

Reg. \$85.00 Ea

\$72.25 Ea

C 4524-250-003

Fringed Tapestry Bag

Dim. 13"X9"X6"

Reg. \$85.00 Ea

\$72.25 Ea

D 4524-250-004

Embroidered Shopper Bag

Dim. 15"X14"X7"

Reg. \$99.00 Ea

\$84.15 Ea

15%
off

Damascus Knife Sale

Damascus Knives - a higher level of artistry.

The reputation and history of Damascus steel has given rise to many legends, such as the ability to cut through a rifle barrel, or cut a hair falling across the blade. *No evidence exists to support such claims, but you can judge the quality first hand when you order.*

Damascus Patch Knife with Stag Handle & Sheath

1/8" thick blade At 8 1/2" overall length with a
3 1/2" x 1" blade,

4926-033-001 Reg. \$37.50 Ea **\$31.88** Ea



Damascus Hunter with Sheath

The beautiful blade with clip point measures 6 3/4" long by 1 1/4" at the widest and 3/16" thick at the hilt. Overall length is 11 1/4".

4926-032-001 Reg. \$59.00 Ea **\$50.15** Ea

Damascus Clip Point Hunter with Sheath

Overall length of knife is 8".

4926-033-009 Reg. \$89.00 Ea **\$75.65** Ea



Lone Star Damascus Skinner with Stag Handle & Sheath

4-1/2" skinner blade . 9-1/4" in overall length.

4926-033-005 Reg. \$75.00 Ea **\$63.75** Ea

Damascus Fighting Bowie with Sheath

Blade that is fully 8 3/4" long and 3/16" thick!
Overall length is 13 1/2".

4926-033-006 Reg. \$99.00 Ea

\$84.15 Ea



Spear Point Damascus Patch Knife with Sheath

7" overall with a 3-1/4" spear point blade.

4926-033-008 Reg. \$39.00 Ea **\$33.15** Ea

Damascus Toothpick with Sheath

It's 14" overall with an 8-1/2" x 1" Damascus blade.

4926-033-003 Reg. \$79.00 Ea **\$67.15** Ea



SAVE 15% ON KNIVES



6" blade that is 5/32" thick. Overall length of 9-1/4."

Cartouche Knife with Sheath

4926-008-101 Reg. \$49.00 **\$41.65** Ea



17" overall with belt sheath. Carbon steel blade is over 10" and has a wide blood groove. The handle features antiqued bone scales.

Rifleman's Bowie Knife with Sheath

4926-002-010 Reg. \$39.75 **\$33.79** Ea



Stainless Skinner with Sheath

4928-004-001 Reg. \$99.00 **\$84.15** Ea



Stainless Guthook with Sheath

4928-004-002 Reg. \$99.00 **\$84.15** Ea



Damascus Skinner with Sheath

4928-004-101 Reg. \$135.00 **\$114.75** Ea



Damascus Guthook with Sheath

4928-004-102 Reg. \$135.00 **\$114.75** Ea

Assembled right here in the USA by veterans and families of those that have served, these knives are perfect examples of a solid but beautiful working man's knife. Each knife handle is made from hand select, highly polished deer antler which is inlaid with genuine Kingman turquoise. A brass guard is perfectly fit for aesthetics and safety. Knives are available in two blade options (Skinner or Guthook) and also in two steel options (Stainless or Damascus). Either way you go, you will be satisfied. A knife that should last a lifetime. Each knife measures approximately 9" and comes with a fitted leather sheath.



A B C D

Dream Catcher Earrings

Beautiful stainless steel dream catcher earrings. Offered in gold, silver, and rainbow metals. Smaller sizes measure 9/16" diameter. Larger sizes are 1"

Number	Key	Description	Pair	Pr (3+)
8545-006-102	A	Multi Color-Silver	\$5.95	\$5.35
8545-006-103	B	Multi Color-Gold	\$5.95	\$5.35
8545-006-104	C	Silver	\$4.95	\$4.45
8545-006-105	D	Gold	\$4.95	\$4.45



back
in
stock

E
Our hand-painted earrings are sold assorted in a wonderful array of colors, shapes, and styles. Dangles are made from seed beads, bugles, and stainless steel tear-drops. Fish hooks are surgical steel and hypoallergenic. 2 1/2" total length. *Comes assorted in more than the 4 styles shown above.*

Number	Key	Description	Pair	Pr (3+)
8545-006-120	E	Painted Assorted Color	\$6.25	\$5.65



Cloisonne Pendants

Very nice silver plated pendants. Fully inlaid with a Montana blue cloisonné. Buffalo pendant is 1" in diameter. Bird pendant is 7/8"

Number	Key	Description	Ea	Ea(3+)
709-2507-010	A	Bird	\$5.50	\$5.25
709-2507-012	B	Buffalo	\$5.50	\$5.25



Civil War Belts

Our waist belt is made of vegetable tanned leather dyed black and is fully adjustable to accommodate waist sizes up to 50. Furnished complete with buckle in solid brass.

Number	Key	Description	Ea
4524-601-201	A	US Officer Belt	\$49.00
4524-601-202	B	CS Officer Belt	\$49.00

Scalp Lock



Scalp locks are used for an endless array of applications including war shirts, leggings, blanket strips, shields, etc. Our locks are made from trimmed horsehair and secured by a 1" metal cone. On the opposite end of the lock are long sinew lace ties making it easy to attach to your project. Measuring 8" in length from the top of the cone to the bottom of the hair, these locks can be dressed up with glass or metal beads, chevrons, ribbon, small bells, or fluffs. You have the option of black or white hair as well as brass or tin cones. *You may assort styles to reach quantity discount.*

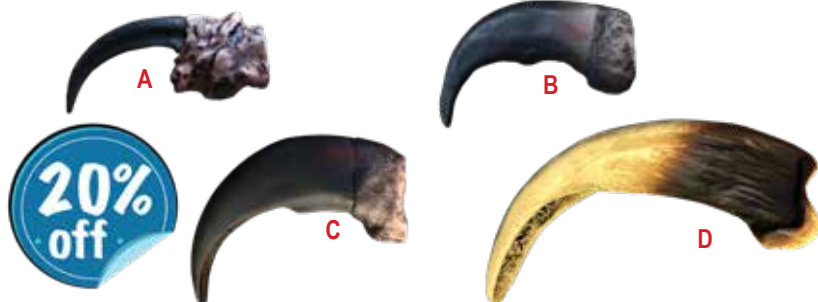
Replace * with desired style.** Brass - 101(Black), 102(White), Tin - 201(Black), 202(White)

3590-001-*** Reg. \$1.95 **\$1.66 Ea**

Lye Soap

Homemade lye soap bricks that are made from reclaimed lard. This soap has a beautiful, old fashioned tan hue and comes with a long list of wonderful uses. Whether you use it for laundry, bath soap, dish washing or as a grease cutter, you should always keep a few bars in your stow. Some even use it to remedy poison ivy! Bricks weigh in at about 6 ounces.

6507-100-100 Reg. \$2.50 **\$2.13 Ea**



Realistic Claws-Economy Line

Due to the outstanding success in selling hand-painted artistic reproductions, we have decided to offer a slightly lower imported grade of these same reproductions. At a much lower price, but with great detail, these reproductions will make nice necklaces, Indian jewelry and other craft products.

Number	Key	Description	Reg	Ea	Ea(5+)
9233-301-006	A	Eagle Claw - 2"	\$3.50	\$2.80	\$2.52
9233-302-006	B	Bear Claw - 2-1/2"	\$3.50	\$2.80	\$2.52
9233-303-006	C	Bear Claw - 3-1/2"	\$4.95	\$3.96	\$3.56
9233-304-006	D	Bear Claw - 4-1/2"	\$5.95	\$4.76	\$4.28

Hand-Rolled Buckskin Fringe



These twisted buckskin fringes are expertly rolled for a nice, even look for fans, gourds, etc. Each bunch consists of 12 pieces approximately 8-10" long.

4523-000-026 White 4523-000-153 Smoked

Reg. \$16.00 **\$14.40 Ea** **\$12.96 Ea (3+)**

**A****B**

Economy Simulated Sinew

Offered in both 4 ounce and 8 ounce spools. Strong, tacky, and less expensive than other simulated sinew.

Number	Key	Description	Ea	Ea(3+)	Ea(12+)
5034-024-905	A	4 oz Natural color	\$6.50	\$6.20	\$5.55
5034-024-910	B	8 oz Natural color	\$12.95	\$12.30	\$11.00

Plastic Crow Beads

Like the glass Czech Crow Beads, these are 9mm in diameter, but lightweight & unbreakable for use in necklaces, breastplates, chokers, purses, and other regalia items. Choose from opaque, transparent, metallic & neon colors.

Opaque Colors



001 005 007 010 019 026 028 036 056 081 098 116 146 154

Neon Colors



178 208 238 240 260 265 283 525 490 492 494 495 496

Transparent Colors

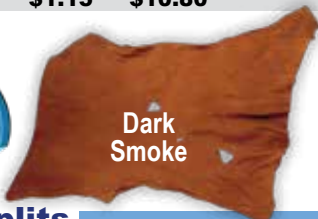


012 056 080 122 146 153 156 212 243 266 284



To order by Item #, replace the *** with desired color number.

Number	Description	25	100	1,000
8320-009-***	Regular Colors	N/A	\$1.06	\$9.99
8320-009-***	Gold/Silver/Copper	\$1.23	\$4.21	\$32.51
8323-009-***	Transparent	N/A	\$.84	\$7.91
8320-009-***	Neon	N/A	\$1.15	\$10.80

**Gold****Dark Smoke**

Gold & Dark Smoke Buckskin Splits

These splits are supple, double-sueded, and perfect for all light-duty projects. As is the nature of splits, the hides are often narrower and not as thick as top grain hides, but they are nice and soft.

Gold

Number	SF	Reg.	Ea
1600-953-004	4-6	\$12.95	\$11.01
1600-953-006	6-8	\$17.95	\$15.26

Dark Smoke

Number	SF	Reg.	Ea	Ea(3+)
1600-978-004	4-6	\$12.95	\$11.01	\$9.90
1600-978-006	6-8	\$17.95	\$15.26	\$13.73

Kinni-Kinnick

These are first rate blends from a combination of herbs and tobaccos found in various parts of the country. **Packed in 6" x 4" Ez-Lok bags.**



Reg. \$8.95 Ea
\$8.06 Ea \$7.38 Ea(3+)

NOTE: Texas State Law prohibits the sale of Tobacco products to anyone under the age of 21. When ordering, please supply us with proper age identification.

Ceremonial
A blend of leaves, roots and tobaccos reminiscent of the smoke from Indian ceremonial fires.

4521-009-175

Prairie Pride
A light sweet blend of tobaccos and herbs from the prairie country.

4521-012-175

Northern Plains
Mild blend of cool burning tobaccos, leaves and herbs common to Indians of the upper Missouri River country.

4521-007-175

Rendezvous
An early American blend with the distinct flavor of wild mountain cherries.

4521-030-175

Eastern Woodlands
A unique blend of tobaccos, roots and bark favored by Indian forest dwellers of Eastern U.S.

4521-010-175

Western Rockies
Blended tobacco from the settlers of the Western Rockies, brought from their home in the East.

4521-031-175

Northwest Coast
An aromatic blend of tobaccos carefully mixed with herbs and bark from the Pacific Northwest. Recreates a favorite smoke of the Totem Pole people.

4521-011-175

Jeremiah Johnston
True American blend of burley tobaccos popularized by mountainmen of "Liver Eatin" Johnston's day.

4521-032-175

Osage Hills
A mild but outstanding blend of tobaccos enriched with natural herbs and leaves.

4521-005-175

Catamount (Mountain Lion)
A hearty blend of aromatic, slow burning tobaccos prepared from fine, flue cured burleys in the tradition of the early Pennsylvania settlers.

4521-033-175



Colonial Clay Pipes

Made in England as "throw away" pipes. These are all authentic, original styles used by virtually every smoking man from the 16th through the 18th centuries.

Number	Key	Description	Reg.	Each
4620-403-001	A	1600s Elizabethan Cutty or "Voyager's" 4-1/2"	\$13.50	\$10.80
4620-403-002	B	1800s 7" Social Cutty	\$15.50	\$12.40
4620-403-010	C	1700s 9" Social Cutty Pipe	\$17.95	\$14.36



Marbled Colonial Clay Pipes

Number	Key	Description	Reg.	Each
4620-404-001	D	1600s Elizabethan Cutty or "Voyager's" 4-1/2"	\$16.95	\$13.56
4620-404-002	E	1800s 7" Social Cutty	\$18.50	\$14.80
4620-404-010	F	1700s 9" Social Cutty Pipe	\$19.95	\$15.96

Luxury Plush Blankets



001



003



004



006

15% off



007



008

These high quality plush blankets are super soft, made to keep you cozy and warm, and are wrapped in beautiful Southwest Native designs that feature rich colors and amazing detail. Made of microfiber polyester for a wonderfully plush, fleecy appearance and a unique silky softness against your skin. Queen Size 79"x95".

3702-104-*** Reg. \$55.00 **\$46.75** Ea

Apache Blankets and Shams



15% off

Blankets



242 081

Shams



242 081

3711-402-***

3751-402-***

Fully reversible bedspreads in a classic Native design. Made from acrylic yarn, each bedspread reflects the rich history of Native trade blankets. Adds vibrancy to any bedroom but can also be used as a sofa throw, seat cover, or for apparel. Complete your Southwest décor with our pillow shams in matching designs and colors. **Shams are made from same material as the bedspreads.** Replace *** with color number.

Queen Size 88"x96" \$72.25 Sham 24"x30" \$16.96 Ea

10% off



001
Klagetoh



003
Storm Pattern



002
Two Grey Hills



004
Red Mesa

Navajo Style Rugs

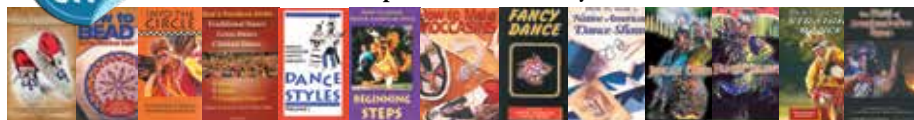
These large rugs are woven in four traditional Navajo style designs and colors and are classic examples of Southwestern décor. Perfect for a floor covering or western tapestry wall hanging, they're ideal for your cabin, lodge, or for a rustic bunkhouse look. Hand woven in clean durable acrylic, they measure approximately 32"x64". Replace *** with desired design

0244-021-*** Reg \$65.00 Ea **\$58.50** Ea **\$53.10** Ea(3+) **\$47.70** Ea(6+)

DVDs**15%
off**

We are pleased to announce that we are now the exclusive stocking distributors of the fine quality Full Circle Videos! Featuring highly accomplished, American Indian craftworkers and dancers, these professionally produced videos are the ultimate in learning contemporary craftwork and Native American dance styles.

For additional descriptions see www.crazycrow.com



Moccasin Making DVD 4085-001-003 Reg. \$19.95 **\$16.96**

How To Bead

Vol 1 Loom Beadwork 4085-002-006 Vol 2 Lazy Stitch Beadwork 4085-002-007 Vol 3 Peyote Stitch 4085-002-030
Vol 4 Medallions 4085-002-031 Vol 5 2 Needle Applique 4085-002-032

YOUR CHOICE Reg. \$19.95 **\$16.96**

Into The Circle DVD 4085-002-005 Reg. \$25.00 **\$21.25**

Men's Northern Styles DVD 4085-002-026 Reg. \$23.00 **\$19.55**

Native American Men's & Women's Dance Styles
Vol. 1 & 2 DVD 4085-002-027 Reg. \$25.00 **\$21.25**

How To Dance Native American Style
DVD 4085-002-029 Reg. \$19.95 **\$16.96**

How To Make Moccasins DVD 4085-002-033 Reg. \$19.95 **\$16.96**

Fancy Dance - Vol. 1 DVD 4085-002-034 Reg. \$19.95 **\$16.96**

How To Make A Native American Dance Shawl
DVD 4085-002-035 Reg. \$19.95 **\$16.96**

Jingle Dress DVD 4085-002-041 Reg. \$19.95 **\$16.96**

Fancy Shawl Dance DVD 4085-002-042 Reg. \$19.95 **\$16.96**

Men's Southern Straight Dance DVD 4085-002-043 Reg. \$19.95 **\$16.96**

Acrylic Scarves

These 100% acrylic scarves feature an old-time floral pattern. Ideal for head wraps and aprons (cut in half and fringed). Available with or without gold metallic stripes. Hand washable. To complete item number, replace *** with desired color number.

NOW AVAILABLE IN LARGER 44" SIZE!



001 Black



026 White



081 Red



146 Yellow



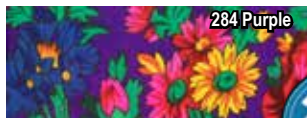
218 Green



238 Turquoise



260 Royal



284 Purple

Floral 29"

4613-001-*** Reg \$8.95 **\$7.16** Ea

Floral w/ Gold Metallic Stripes 29"

4613-002-*** Reg \$8.95 **\$7.16** Ea

Floral 44"

4613-011-*** Reg \$14.95 **\$11.96** Ea

Floral w/ Gold Metallic Stripes 44"

4613-012-*** Reg \$14.95 **\$11.96** Ea

**20%
off**

Bleached Goat Rawhide



Our goat rawhides are a light natural "bleached" color and average 1-2 oz in thickness. Ideal for lightweight projects such as women's drum heads, lamp shade covers, quiver liners, black powder use, and rattle lacing. There are also certain projects where these hides could be a cheaper substitute for deer rawhide. We offer these rawhides in two general size ranges.

1708-001-900 6-7 SF Reg. \$39.00 **\$33.15** Ea **\$29.75** Ea(3+)
 1708-003-900 10 SF+ Reg. \$55.00 **\$46.75** Ea **\$42.08** Ea(3+)

Blades With Guards

We are proud to offer you a new line of blades that are both high quality and affordable. Each is forged from stainless steel and comes pre-fitted with a brass guard.

A Swedged Bowie



B Clip Point



C Clip Point



D Clip Point



E Swept Skinner



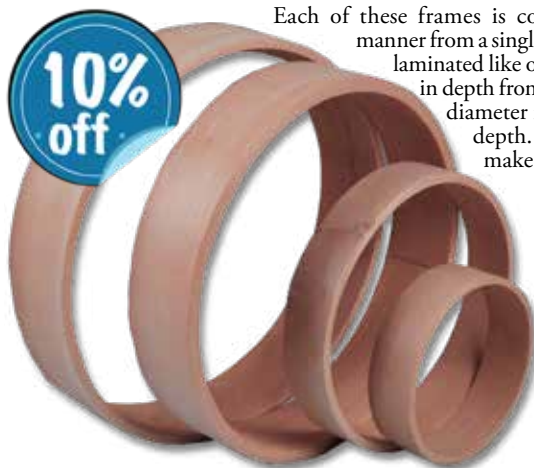
Number	Description	Reg	Ea
A 5450-002-110	10" OVERALL 5.25" BLADE STAINLESS STEEL BRASS GUARD	\$17.95	\$15.26
B 5450-007-102	8.5" OVERALL 6.25" BLADE 1 1/8" WIDE STAINLESS STEEL	\$13.95	\$11.86
C 5450-007-110	10.5" OVERALL 6.25" BLADE W/ GUARD	\$16.95	\$14.41
D 5450-007-111	15" OVERALL 10.25" BLADE HUNTER W/ GUARD	\$23.50	\$19.98
E 5450-010-110	9.25" OVERALL 5.25" BLADE STAINLESS STEEL BRASS GUARD	\$12.95	\$11.01

Hardwood Drum Frames



Each of these frames is completely handmade in the traditional manner from a single piece of select hardwood rather than being laminated like our regular frames. The smaller sizes, range in depth from approximately 1-5/8" to 2" and the larger diameter frames run approximately 2-1/2" to 3" in depth. These are well-made, sturdy frames that make excellent hand drums!!

Number	Size	Reg.	Ea
6514-209-003	9"	\$12.95	\$11.66
6514-213-003	13"	\$26.00	\$23.40
6514-215-003	15"	\$29.50	\$26.55
6514-218-003	18"	\$35.00	\$31.50
6514-220-003	20"	\$40.00	\$36.00



18th Century Linen Hunting Shirts



Often called a “Common Shirt”, this style was prevalent from around 1760 throughout the early 1800s. Our shirts are made from a 60/40 linen cotton blend and have all the characteristics of the originals. Both styles are fully gusseted, pleated at the sleeves and plenty long for wear with a belt. Designed from drawings of a period example found in *The Frontier Rifleman*, by Richard B. LaCrosse, Jr.

The Rifleman’s Pullover Hunting Shirt

It is a light, natural color and features a narrow collar with button and loop closure, pleated sleeves and cuffs with a single button. The neck opening terminates in a decorative, heart appliqué.

Number	Size	Color
4615-083-150	Medium	Lt. Natural Linen
4615-084-150	Large	Lt. Natural Linen
4615-085-150	X-Large	Lt. Natural Linen
4615-086-150	XX-Large	Lt. Natural Linen

Your Choice Reg. \$69.00 **\$58.65 Ea**



The Frontier Pullover

It is dyed a dark, natural beige linen color and features a full collar with a button and loop closure and cuffs with a single button. The bottom of the neck opening is finished off with a decorative, double heart appliqué.

Number	Size
4615-103-158	Medium
4615-104-158	Large
4615-105-158	X-Large
4615-106-158	XX-Large

Your Choice Reg. \$79.00 **\$67.15 Ea**



Canoe Cup With Barrel Toggle

Grab a drink with our hand carved Canoe Cup (aka “Noggin”). This is a faithful reproduction of an actual Museum of the Fur Trade specimen used by the early Voyagers. The barrel shaped toggle and thong allow you to easily secure it to your belt. The hardwood cup is approximately 5-1/4” long.

4691-001-001 Reg. \$14.95 **\$13.46 Ea** **\$12.11 Ea(3+)**



Leather Journals

Nice leather bound journals include a wrap closure for extra security and unlined pages of cotton rag paper inside. They measure a convenient 6 inches by 4-3/4 inches (15.2 cm by 12.1 cm) and will fit in all but your smallest bag. Makes a great personal journal, organizer, diary, travel journal, or sketchbook for the artist. Approx Pages:105 - 110 sheets (210-220 pages).

Offered in five styles: hand laced, Celtic cross, distressed, Rolled and heavy leather.

A 4553-001-001	Hand Laced	Reg \$17.50	\$14.00 Ea
B 4553-001-002	Celtic Cross	Reg \$17.50	\$14.00 Ea
C 4553-001-003	Distressed	Reg \$17.50	\$14.00 Ea
D 4553-001-010	Rolled	Reg \$17.50	\$14.00 Ea
E 4553-001-020	Heavy Leather	Reg \$17.50	\$14.00 Ea



Patterns

We've received lots of compliments on our patterns. They're carefully researched, historically accurate and thoroughly tested; and the size range on our Shirts & Frock now includes XXL. Our patterns include historical information on tribal styles and decorations, handy sewing tips, and much more. The easy-to-follow, heavily illustrated instructions make them the best on the market, so order several and save even more!

- 4799-500-001 Buckskin Pants
- 4799-500-002 Voyageur's Shirt
- 4799-500-003 Capote
- 4799-500-004 Mountain Man Workshirt
- 4799-500-005 Rifleman's Frock
- 4799-500-006 Breechclout & Leggings
- 4799-500-008 Plains Ribbon Shirt
- 4799-500-009 Plains War Shirt
- 4799-500-010 Plains Style Moccasins
- 4799-500-011 Plains Hi-Top Moccasins
- 4799-500-012 Fur Trapper Hat
- 4799-500-013 Plains Buckskin Dress
- 4799-500-014 Plains Cloth Dress
- 4799-500-015 Drop Sleeve Shirt
- 4799-500-016 Cherokee Tear Dress
- 4799-500-017 Cherokee Ribbon Shirt
- 4799-500-018 Grass Dance Outfit



- 4799-500-019 Tradecloth Dress
- 4799-500-020 Indian Women's Accessories
- 4799-500-021 Cherokee Moccasins
- 4799-500-022 Southern Plains Tab Leggings
- 4799-500-023 Southern Plains Flap Leggings
- 4799-500-025 Eastern Hunting Shirt
- 4799-500-026 Trapper's Fringed Buckskin Shirt
- 4799-500-031 Jingle Dress
- 4799-500-033 Straight Dance Suit
- 4799-500-040 Ruffle Front Shirt
- 4795-500-046 Longhunters Accessories
- 4799-500-201 Child's Ribbon Shirt
- 4799-500-202 Child's Cloth Dress
- 4799-500-203 Child's Jingle Dress
- 4799-500-204 Child's Capote
- 4799-500-206 Child's Moccasins

Reg. \$9.95
\$8.96 Ea \$8.51 Ea (3+)



5534-201-112

5534-202-112

5534-203-112

Celtic Conchos

Patterned after old coin conchos of the past, these Celtic styled conchos are heavy duty and ready for adorning period garments. Made of zinc and finished in sterling silver with screw post back for easy attachment. 1-3/16".

Reg. \$3.00

\$2.40 Each

\$2.16 Ea(5+)

Greek Leather Thong

A nice, round leather thong very well suited for chokers and trade beads. 100 yd spools in 2 widths: 1mm and 2mm; and 2 colors!

Replace *** with the color number desired.
 (001) Black (158) Natural



Number	Size	Reg	Yard	Yd(10+)	Yd(100+)
5031-050-***	1mm width	\$.79	\$.67	\$.55	\$.43
5031-100-***	2mm width	\$.79	\$.67	\$.55	\$.43

2022-4R

CRAZY CROW
Trading Post

Outside 48 States: Please call (903) 786-2287
7:30A.M. - 5:30P.M. CST MONDAY THRU FRIDAY
24-HOUR FAX: (903) 786-9059
E-FAX: 214-291-5681
E-MAIL: info@crazycrow.com
WEB SITE: www.crazycrow.com

E-Mail

Phone# ()

We ship *U.S.P.S. or Fedex*. Please provide street address and daytime phone number.

[illegible]

Signature: _____

Previous Balance Or Credit

GRAND TOTAL

Beaded Medicine Bag

These are beautifully beaded with Czech beads in traditional designs. Each one is accented with bone hair-pipe, glass beads and brass beads. Bag measures 2 1/4" x 1 1/2" and come assorted.

4524-509-010 Reg. \$19.95 Ea
\$15.96 Ea



Beaded Shoulder Purse with Braided Strap

This purse is beaded with 11/0 Czech beads on a Palomino super soft suede leather. They are 8" wide and 9" tall, with half of the 5 1/2" flap decorated with a 4" hand beaded rosette. All edges are trimmed with beadwork in a traditional design. Features a 48" braided strap with fringe adorning each end. Includes a zippered interior pocket.

8545-160-001 Reg. \$79.00 Ea **\$63.20 Ea** **\$56.80 Ea(3+)**



Beaded Shoulder Purse with Beaded Strap

This purse is beaded on a grain leather cowhide and features a 38" fully beaded strap in a traditional design. 8" wide, 9" Tall with a 5 1/2" flap that has a 4" handmade rosette. Adorned with beaded edges and features a zippered pocket inside.

8545-161-002 Reg. \$89.00 Ea **\$71.20 Ea** **\$64.00 Ea(3+)**

Beaded Coin Purse

Exceptional quality hand beaded coin purse beaded with 11/0 Czech beads on a suede background. Each one has a zippered closure and is exquisitely made. Clam shape bag is 4 1/2" wide x 3 1/2" tall. Round shape is 4" in diameter.



001 Lt. Blue



002 Turquoise



003 Sunburst



050 Sunburst

Note: Replace *** with desired color number.

8545-155-*** Reg. \$48.00 Ea **\$38.40 Ea** **\$34.60 Ea(3+)**

PRSRT STD
U.S. POSTAGE
PAID
Gainesville, TX
Permit No. 55

1801 Airport Rd., Pottsboro, TX 75076
www.crazycrow.com
Toll Free Order Line: 1-800-786-6210 • Outside 48 States: (903) 786-2287
• 24-hr FAX: (903) 786-9059



Sale Prices Good Through August 31, 2022

Dealer 2022-4R